



"WE STORE THE FUTURE"

PORTABLE POWER STATION

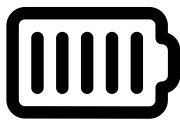
**USER MANUAL
BT-300W**



www.bataryasan.com

General Description

This product is a high-end fashion off-grid portable power station, independently developed by Bataryasan Energy Co. Ltd. Light and portable, stylish and generous, using automotive-grade LiFePO4 batteries. It is safe, reliable, and durable; providing 220V AC and 5V or 12V DC output, suitable for various equipment such as aerial drones, portable ventilators, mobile phones, tablets, laptops, desktop computers, small printers, various lamps, small fish tanks, photographic equipments, electric balance wheelbarrows, etc. It's convenient for users to use at home, travel, outdoor work, camping picnics, mountaineering adventures, etc.



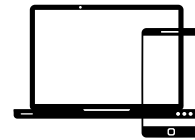
HIGH CAPACITY

Long battery life, meet the needs of indoor and outdoor scenes



SAFETY

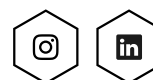
MSDS certified battery cell to ensure power safety



STRONG COMPATIBILITY

Multiple outputs can supply power for various electrical appliances

Quality and Safety Certificates



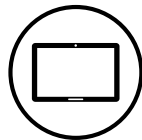
BT-300W Main Parameters

Power:	300 W	Battery (Wh):	307 Wh
Capacity:	24 Ah	Battery chemistry:	LiFePO4
Type-C PD Output:	5V~20V	12V DC Output:	12V DC, 5A
USB-A:	5V, 2.1A	AC Output:	220 V, 50Hz
DC Input (Charge):	14.4V, 20A	Life Cycle:	>3000
Full Charge Time:	about 3.5 hours	Weight:	~4.8 kg

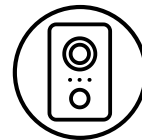
You Can Use



LAPTOP
(51W)
6 times



TABLET
(8000mAh)
10 times



SPEAKER
(40W)
7.5 hours



LIGHT
(10W)
30 hours



PHONE
(4000mAh)
20 times



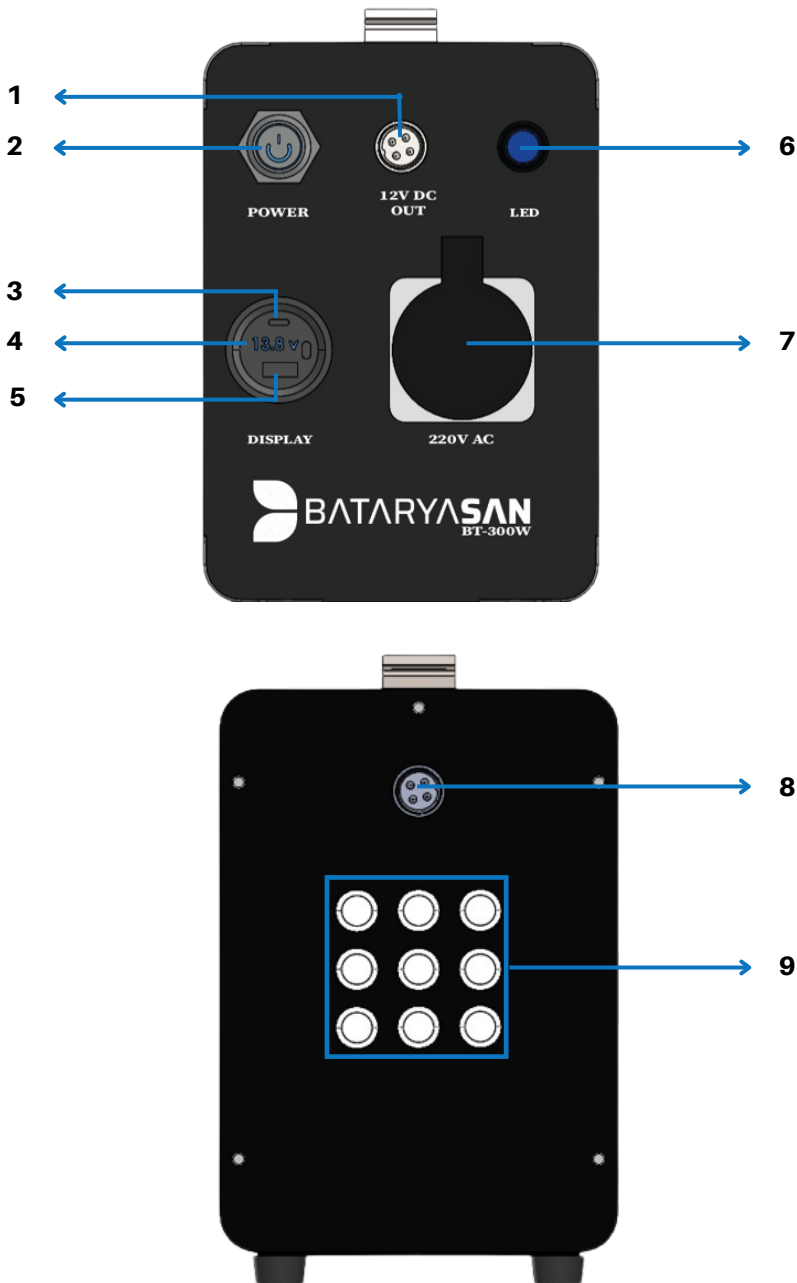
CAMERA
(1250mAh)
66 times



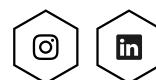
CAR REFRIGERATOR
(60W)
5 hours



Operation Control And Description



1	12V DC Output port-1
2	Power On/Off
3	TYPE-C Output port
4	Battery voltage display
5	USB-A Output port-1
6	LED On/Off
7	220V AC Output port-1
8	Charging interface
9	LED



Safety

Please pay attention to the following before using this product, otherwise it may damage your electronic devices or cause a danger. Observe all Input/Output of your electronic devices. To avoid fire or electrical shock hazard, observe all ratings on unit and products you intend to use.

- 1) Rechargeable LiFePO4 battery is equipped with this product so take particular attention on operation, storage and delivery.
- 2) Recharge only with the charger specified by the manufacturer. A charger that is suitable for one type of battery pack may create a risk of fire when used with another chargers.
- 3) Charge it in a ventilated location, do not put this product in water, or do not throw or beat this product, or it may damage inside.
- 4) Keep this product and related accessories in a safe place, which is not accessible to children. Do not expose it to sources of ignition or other heat sources to avoid danger.
- 5) Avoid touching the charging/discharging socket with the metal objects. Otherwise will cause a short circuit and injured.
- 6) Do not disturb while fan is being operated on unit. Inadequate ventilation may cause damage to the unit. Do not stack anything on top of the unit in storage or in use.
- 7) Do not disassemble, crush, heat above 40°C or incinerate, or it may risk of fire, explosion, and burn.
- 8) Inspect the unit for dirt, dust, or moisture on a regular basis.
- 9) This power station potentially generates the same fatal AC power as a normal household wall outlet. Please use it carefully just like using a normal AC outlet on the wall.
- 10) Do not insert any contaminated into output port or ventilation holes.
- 11) Any repair must be carried out by the manufacturer or an authorized repair agent in order to avoid danger. Do not attempt to replace the internal battery with anything other than the authorized replacement battery available from BATARYASAN.
- 12) Use power station only with specifically designated battery pack. Use of any other battery packs may create a risk of injury and fire.



How to know if your electronic devices will work with the power station?

Firstly, you need to determine the required amount of power of your electronic device. This may require some research by yourself, examining the user guide for your electronic device should have this information. Secondly, you will need to check the capacity for the individual output ports. For example, the AC port of BT-300W is monitored by an inverter that allows for 300 of continuous power. This means if your device is pulling more than 300W for an extended period of time, the portable power supply will shut off.

Storage and Downtime Maintenance

Failure to maintain your power station by following steps can result in battery damage.

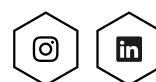
1. Please charge your power station before storage and fully recharge it every 6 months at least. Store it in a cool and dry place.
2. If the main power supply shuts down automatically because of lower battery capacity, please recharge it within 3 months. Otherwise, the battery capacity won't be recovered.

Attention

Cold temperatures (below freezing) can impact the battery capacity of the power station. If you are living in sub-zero conditions, you can drain power from it. Never charge it in the sub-zero conditions, which will damage the LiFePO4 battery and battery capacity may not be recovered

Disposal of Batteries

This marking indicates that this product should not be disposed with other household wastes throughout the TR. To prevent possible harm to the environment or human health from uncontrolled waste disposal, recycle it responsibly to promote the sustainable reuse of material resources. To return your used device, please use the return and collection systems or contact the retailer where the product was purchased.



Warranty

Under normal consumer usage, BATARYASAN promises the original clients that the products from BATARYASAN will be free of defects in terms of quality and working until the warranty term listed in the 'Warranty Period' section below, subject to a few exceptions enlisted as follows. We also want to clarify that BATARYASAN's whole and exclusive warranty obligation is stated in this warranty statement. We will not take any other responsibility relating to the sale of our products, nor will we permit anyone else to take any such responsibility on our behalf.

Warranty Period

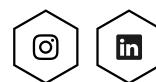
BATARYASAN Portable Power Supply comes with a **24-month** warranty. The warranty period begins on the date of purchase by the initial buyer in each case. It is necessary to provide a transaction receipt from the initial buyer or other legal documentation proof to confirm the starting date of the warranty period.

BATARYASAN's Warranty Does Not Apply To

- Product mishandling (including, but not limited to dropping, exposure to severe climatic conditions, (except for the range -10°C and $+50^{\circ}\text{C}$) water, and incorrect operating of the devices), mistreatment, any modification, accidental damage, or used for anything other than what is recommended by BATARYASAN's current product guidelines,
- Products with an expired warranty period, items that do not have appropriate evidence of purchase, and products that have been lost or stolen,
- Product attempted to repair by anybody other than an authorized facility member,
- Products are not covered by BATARYASAN's warranty unless you charge it fully within seven days of purchase and at least every six months thereafter (The warranty does not cover battery cells due to their cycle is highly dependent on the user's charge and discharge conditions),
- Products from institutions and individuals who are not Bataryasan's dealers,
- Evidence is needed in terms of free goods.

How To Claim Your Warranty?

Please feel free to contact our customer service team at bilgi@bataryasan.com
In case of any warranty contact, please keep your invoice for presenting to customer service.





"WE STORE THE FUTURE"

BATARYASAN ENERGY COMPANY

Yıldırım Beyazıt District, Aşık Veysel Blvd.,
Erciyes Univ. Technology Development Zone,
Outside Door Number: 63/B
Melikgazi/Kayseri/TURKEY



bilgi@bataryasan.com



+90 352 606 06 89



BATARYASAN



www.bataryasan.com