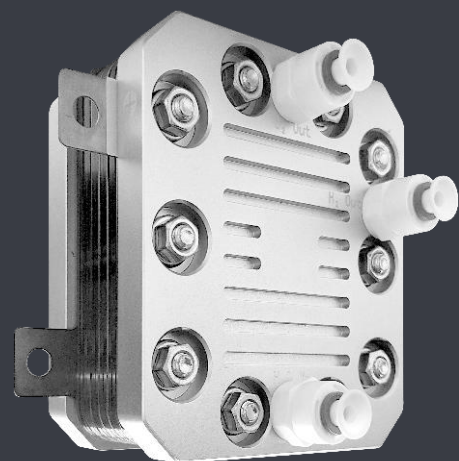
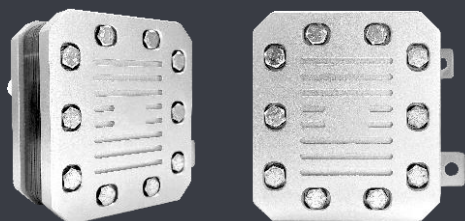


Small size

## PEME 1200mL/min

Can be customized according to the needs of professional



- ✓ Independent R & D and production  
Excellent material and fine workmanship
- ✓ High purity of hydrogen production  
Long service life

- ✓ High pressure resistance  
High pressure hydrogen can be produced
- ✓ High current density  
Low power consumption, voltage stability

### CH7-1 type PEME

Oxygen production	ml/min	>1800	Hydrogen is mixed with oxygen
Hydrogen production	ml/min	>1200	Pure hydrogen, single out
Temperature of circulating water	°C	25-45	
Water consumption	ml/min	≤350	Pure Water, deionized water
Circular manner	/	The water cycle	
Hydrogen purity	%	99.99	After drying
Water electrolysis method	/	Water electrolysis	Proton exchange membrane electrolysis
Maximum stress	Mpa	0.5	
TDS	Anode water	PPM	≤1
	Cathode water	PPM	/
Single cell voltage	V	1.75-2.5	
Power supply	Constant current	A	25
	Constant current voltage	V	21
Dimensions (without lugs)	mm	94×58×106	
Dimensions (including lugs and fittings)	mm	109×73×106	
Weight	kg	1.33	
Application area	GC (gas phase) gas and carrier gas, ELCD (conductivity detector) reaction gas, Ed (atomic emission spectrum detector) reaction gas, hydrogen-rich water machine, hydrogen absorber, etc.		