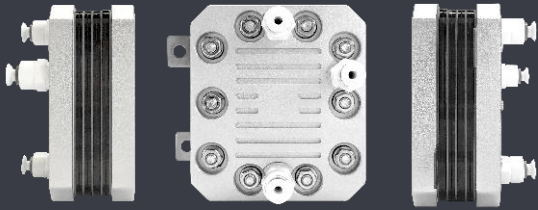
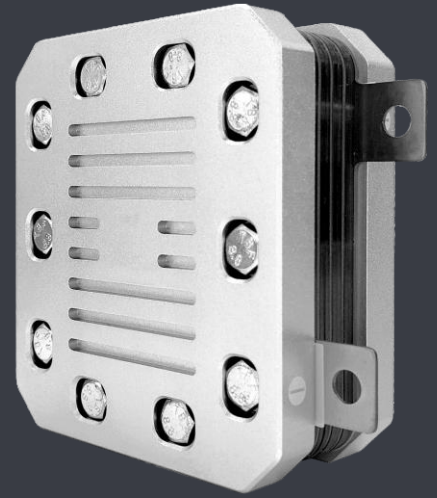


Small size

PEME 600mL/min

Can be customized according to the needs of professional



- ✓ Independent R & D and production
Excellent material and fine workmanship
- ✓ High purity of hydrogen production
Long service life

- ✓ High pressure resistance
High pressure hydrogen can be produced
- ✓ High current density
Low power consumption, voltage stability

CH4-1 type PEME

Oxygen production	ml/min	>900	Hydrogen is mixed with oxygen	
Hydrogen production	ml/min	>600	Pure hydrogen, single out	
Temperature of circulating water	°C	25-45		
Water consumption	ml/min	≤150	Pure Water, deionized water	
Circular manner	/	Gravity cycle/pump cycle		
Hydrogen purity	%	99.99	After drying	
Water electrolysis method	/	Water electrolysis	Proton exchange membrane electrolysis	
Maximum stress	Mpa	0.5		
TDS	Anode water	PPM	≤1	Recommended Ion-exchange resin for circulating water
	Cathode water	PPM	/	
Single cell voltage	V	1.75-2.5		
Power supply	Constant current	A	20	
	Constant current voltage	V	12	
Dimensions (without lugs)	mm	94×43×106		
Dimensions (including lugs and fittings)	mm	109×62×106		
Weight	kg	1.15		
Application area	GC (gas phase) gas and carrier gas, ELCD (conductivity detector) reaction gas, Ed (atomic emission spectrum detector) reaction gas, hydrogen-rich water machine, hydrogen absorber, etc.			