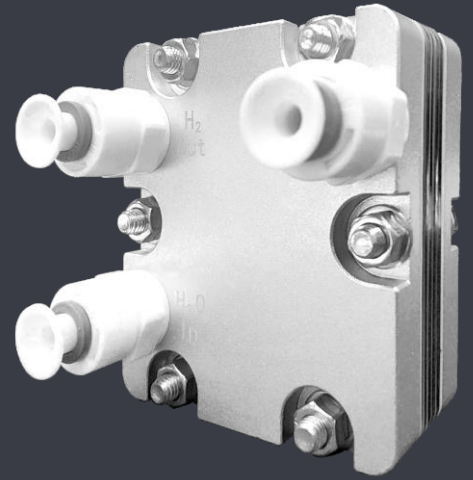
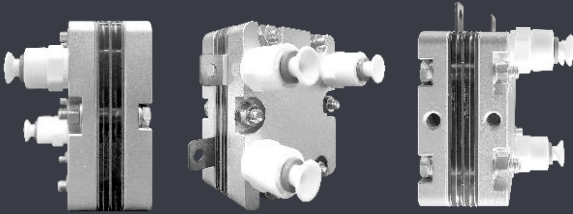


Small size

PEME 200mL/min

Can be customized according to the needs of professional



- ✓ Independent R & D and production
Excellent material and fine workmanship
- ✓ High purity of hydrogen production
Long service life

- ✓ High pressure resistance
High pressure hydrogen can be produced
- ✓ High current density
Low power consumption, voltage stability

CH02-1 type PEME

Oxygen production	ml/min	>300	Hydrogen is mixed with oxygen
Hydrogen production	ml/min	>200	Pure hydrogen, single out
Temperature of circulating water	°C	25-45	
Water consumption	ml/min	≤60	Pure Water, deionized water
Circular manner	/	Gravity cycle/pump cycle	
Hydrogen purity	%	99.99	After drying
Water electrolysis method	/	Water electrolysis	Proton exchange membrane electrolysis
Maximum stress	Mpa	0.5	
TDS	Anode water	PPM	≤1
	Cathode water	PPM	/
Single cell voltage	V	1.75-2.5	
Power supply	Constant current	A	15
	Constant current voltage	V	6
Dimensions (without lugs)	mm	60×30.8×70	
Dimensions (including lugs and fittings)	mm	72×46.5×70	
Weight	kg	0.7	
Application area	GC (gas phase) gas and carrier gas, ELCD (conductivity detector) reaction gas, Ed (atomic emission spectrum detector) reaction gas, hydrogen-rich water machine, hydrogen absorber, etc.		